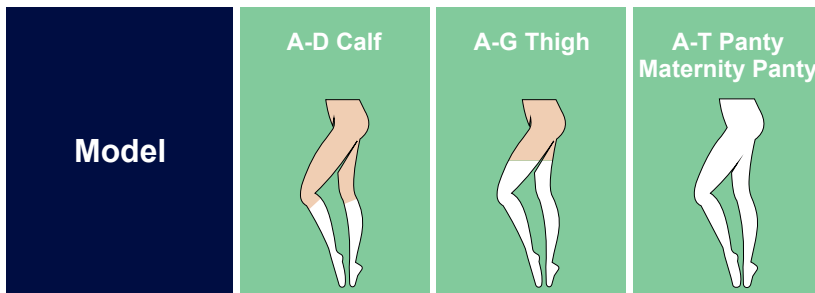


## VARICOSE STOCKINGS

Thanks to compression feature via rounded knitting technology, the stockings are designed particularly for treatment of moderate edema formation, or of circumstances prone to edema formation, of varicose formation during pregnancy, of low-level edemas, of inflammatory venous diseases, and of thrombosis. There is a gradual pressure system in compliance with the medical pressure standards. Open or closed-toe options are available.

## HOW TO CHOOSE SIZE

Two measurement are sufficient to choose the exact size. The ankle circ (cb) and height of the leg (cg) then compare the measurements with the table. This measurements confirm the selected stocking size. Do not use the stocking if the measurement does not match with the table.



### Explanation Of Compression Classes

CCL 1	Compression in mmHG 18.0 - 21.0
CCL 2	Compression in mmHG 23.0 - 32.0
CCL 3	Compression in mmHG 34.0 - 46.0

### Material Composition

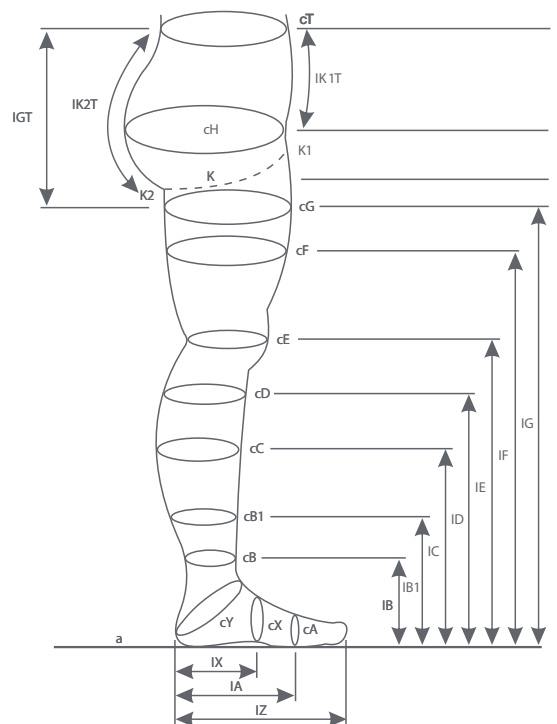
	Elastane (EL)	Polyamide(PA)
CCL 1	25 %	75 %
CCL 2	31 %	69 %
CCL 3	37 %	63 %

Size	All Stockings	Calf Stockings	Thigh Panty Maternity Stockings , Thigh
	Ankle Measurement (cm)	Calf Measurement (cm)	Measurement (cm)
1	18 - 20	27 - 33	43 - 57
2	20 - 22	29 - 36	45 - 62
3	22 - 24	32 - 39	49 - 67
4	24 - 26	34 - 42	53 - 72
5	26 - 28	36 - 45	56 - 77
6	28 - 30	38 - 48	60 - 81
7	30 - 32	40 - 50	64 - 85

### Length of Leg (cm)

IG Normal	72 - 83
IG Short	62 - 71
ID Normal	39 - 44
ID Short	34 - 38

Leg Circumference	SIZE (cm)						
	1	2	3	4	5	6	7
cG	43 - 48	45 - 52	49 - 56	53 - 60	56 - 64	60 - 68	64 - 72
cG	49 - 57	53 - 62	57 - 67	61 - 72	65 - 77	69 - 81	73 - 85
cG	43 - 57	45 - 62	49 - 67	53 - 72	56 - 77	60 - 81	64 - 85
cF	39 - 52	41 - 56	44 - 60	47 - 65	50 - 69	53 - 73	57 - 78
cE	30 - 37	33 - 40	35 - 43	37 - 45	39 - 48	41 - 51	42 - 53
cD	27 - 33	29 - 36	32 - 39	34 - 42	36 - 45	38 - 48	40 - 50
cC	28 - 34	30 - 37	33 - 40	35 - 43	37 - 46	39 - 49	41 - 51
cB1	23 - 27	24 - 29	26 - 32	29 - 35	31 - 37	33 - 39	35 - 41
cB	18 - 20	20 - 22	22 - 24	24 - 26	26 - 28	28 - 30	30 - 32



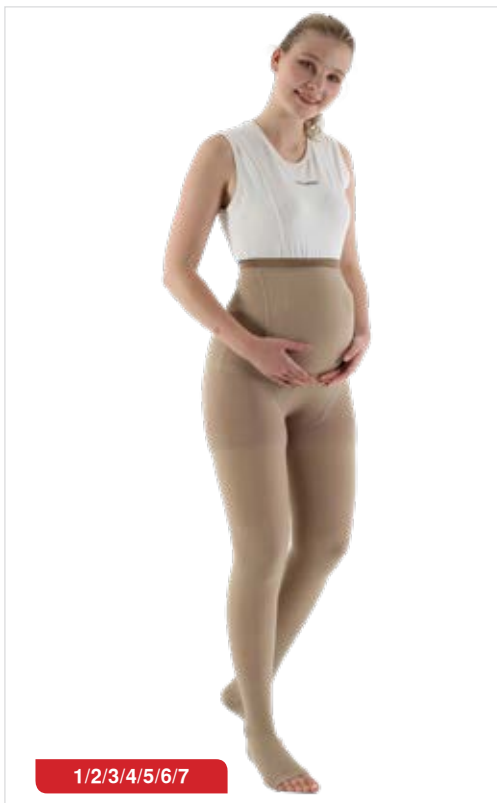
# Compression Stockings



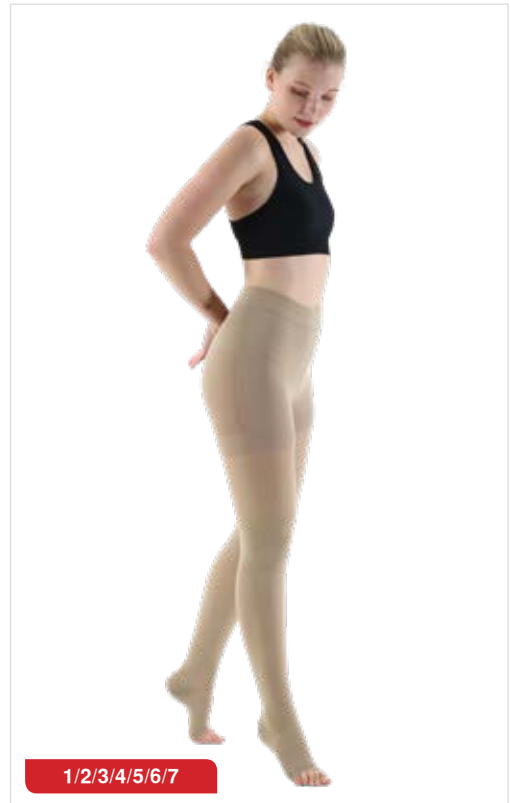
**UNDER KNEE**  
Varicose Stockings



**OVER KNEE**  
Varicose Stockings



**MATERNITY**  
Varicose Stockings



**PANTYHOUSE**  
Varicose Stockings

## ANTI -EMBOLISM STOCKINGS

Clinically designed to promote venous return for prevention of thrombosis before, during and after surgery and for medical conditions requiring prolonged bed rest and before, during and after child birth.

### HOW TO CHOOSE SIZE

Two measurements are sufficient to choose the exact size. The ankle circumference (cb) and height of the leg (cg) then compare the measurements with the table. These measurements confirm the selected stocking size. Do not use the stocking if the measurement does not match with the table.



#### Intelligent Topband

The specially developed intelligent silicone topband ensures a non-slip fit and provides information on the correct fit at a glance.



#### Colour Coded Heel

The colour-coded heel with the velour inner surface reduces the danger of pressure sores, simplifies sorting, and shows that the heel is properly fitted.



#### Inspection Opening

The unobtrusive inspection opening on the sole of the foot allows staff to check the circulation and reduces the risk of falling.



#### Hygienic Toe

The antibacterial and antimycotic toe reduces normal hospital micro-organisms—even after repeated washing.

Knee (AD)							
Size		Leg measurements* (circumference in cm)				Colour code	
		Ankle cB	Calf cC	Below knee cD	Thigh cG	Heel	Thigh
XS	(1)	17 - 19	30 - 35	28 - 34	-	natural	-
S	(2)	19 - 21	31 - 37	29 - 36	-	red	-
M	(3)	21 - 23	32 - 40	30 - 39	-	blue	-
L	(4)	23 - 25	33 - 42	31 - 41	-	yellow	-
XL	(5)	25 - 27	34 - 44	32 - 43	-	orange	-
XXL	(6)	27 - 29	35 - 46	33 - 45	-	black	-
XXXL	(7)	29 - 31	36 - 48	34 - 47	-	brown	-
Thigh (AG)							
XS	(1)	17 - 19	30 - 35	28 - 34	42 - 54	natural	natural
S	(2)	19 - 21	31 - 37	29 - 36	46 - 58	red	red
M	(3)	21 - 23	32 - 40	30 - 39	50 - 62	blue	blue
L	(4)	23 - 25	33 - 42	31 - 41	54 - 66	yellow	yellow
XL	(5)	25 - 27	34 - 44	32 - 43	58 - 70	orange	orange
XXL	(6)	27 - 29	35 - 46	33 - 45	62 - 74	black	black
XXXL	(7)	29 - 31	36 - 48	34 - 47	66 - 78	brown	brown

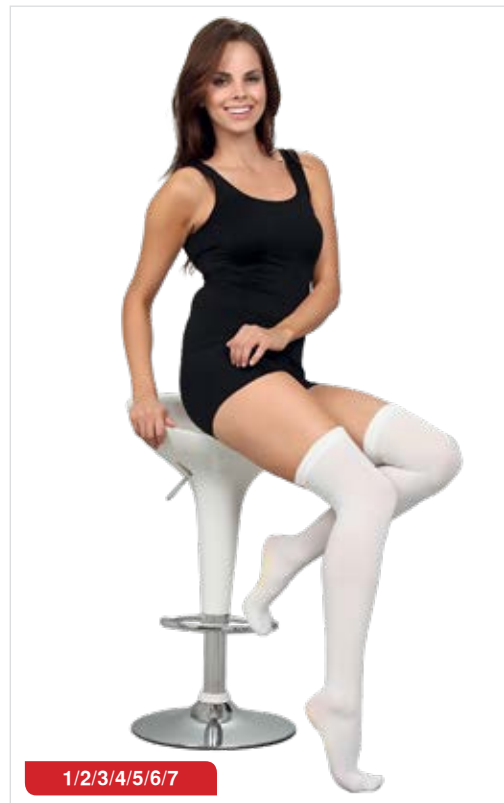
# Compression Stockings



**ANTI-EMBOLI UNDER KNEE**  
Compression Stockings



**ANTI-EMBOLI ARTICULATED ARCH**  
Compression Stockings - Pair



**ANTI-EMBOLI OVER KNEE**  
Compression Stockings